



*Flagging off a new high in luxurious living!*

**OASIS**   
**GrandStand**  
*2,3,4 BHK & Penthouse, Yamuna Expressway*

**OASIS**  
— spaces for life —



An abode  
for champions  
who live life  
in the fast lane

**OASIS**   
**GrandStand**  
*2,3,4 BHK & Penthouse, Yamuna Expressway*



We at Oasis Group  
have always believed  
that what we dream  
is what we achieve.

Since our humble beginning in 2002 we had only one dream and that was to make Oasis Group one of the foremost name in the real estate industry of Delhi NCR. Today we have delivered more than 1,50,000 sq. ft. of residential spaces and more than 5 Million sq. ft. of housing projects are under development. We have combined our innovative ideas with current market trends to deliver elegant residential projects right on time.

The spirit of creativity and perfection of the company is reflected in our endeavor to achieve excellence in everything we do. Oasis Group continues to strive for precision and perfection and is all set to expand its real estate operations and create edifices that will be the benchmark of architectural finesse in the times to come.







**OASIS**  
**GrandStand**  
*2,3,4 BHK & Penthouse, Yamuna Expressway*

## Rev up for an engaging experience

Motorsport is as much about thrill and excitement as it is about meticulous planning, skillful decision making and perfect execution. **Oasis GrandStand** embodies these very nuances to the core.

No wonder, the project has lived up to the high expectations and exacting standards of the racing icon, **Narain Karthikeyan**, and has won his approval!

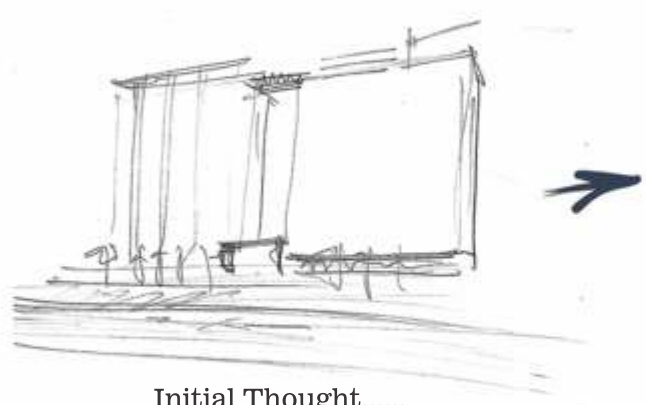
Located on the Yamuna Expressway in Greater Noida, an emerging Formula 1 destination and the hottest real estate hub in Delhi NCR, **Oasis GrandStand** brings to life the thrilling theme of racing, blended seamlessly with state-of-the-art construction engineering, thoughtful architecture, elegant interiors, delightful exteriors and an overwhelmingly zippy ambiance.

Imagine the joy of living each day  
in a surrounding as spectacular  
as the sport itself!

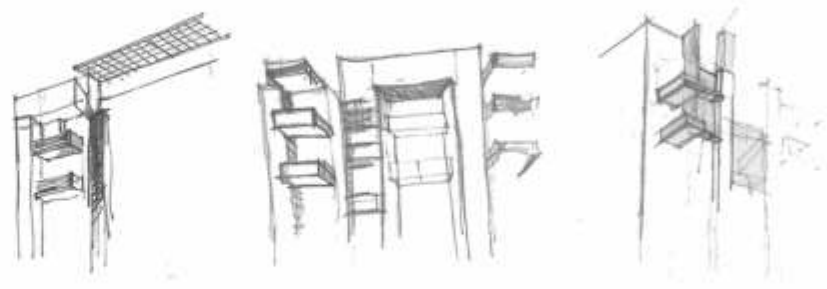




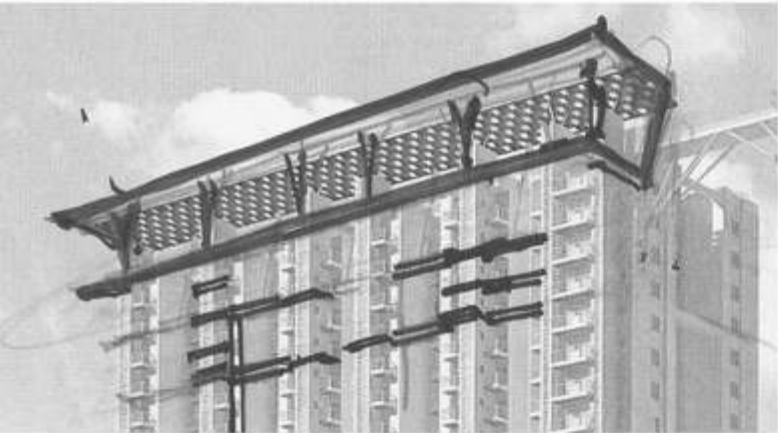
The journey  
from a dream to reality...



Initial Thought.....



More Study...



**Oasis GrandStand** is not just another real estate project. It is a labour of love. Just as Rome was not built in a day, the concept of **GrandStand**, too, took a long time to take shape.

A significant amount of time was spent in keen observation and research before the first brick was laid. From poring over the finest visual imagery and design to painstaking year-long study of climatic conditions, we did it all to create something unique and remarkable, for the connoisseurs of classy living.

The effort gave us the conviction of being on the right track, which shines through every pore of **Oasis GrandStand**.

Grand Stand



Club Inspiration



Almost there....





# In tune with the nature

Oasis GrandStand draws its inspiration from racing sports not merely for aesthetic reasons. Just as a true champion evaluates the weather conditions before setting out on the track, it is essential to understand climatic variations through the year before designing living spaces. Unfortunately, this critical element is often overlooked by constructors.

Driven by a passion to create a premium residential destination that is in communion with nature, we embarked upon a study of the weather conditions through multiple cycles, which was a critical design input for Oasis GrandStand.



Shadows in March



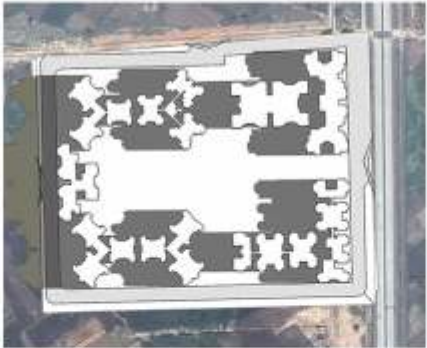
Shadows in June



Shadows in September



Shadows in December

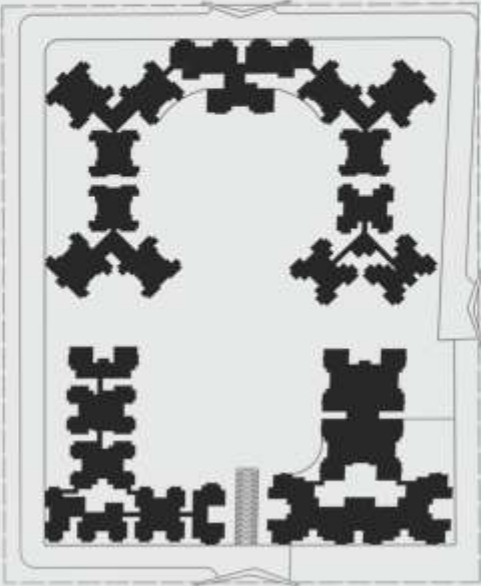


# Keen observation & Research...

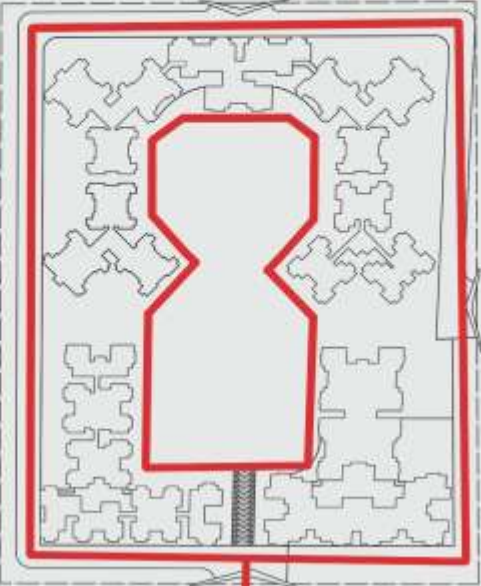
Our world-class architects and designers considered every little detail before setting out: The direction and length of shadows at different times of the year; the predominant wind direction and speed; and the Sun's passage among other parameters. Armed with these insights, we created an inspiring design that lives up to its theme, combining sharp facades with a global, contemporary look.

# Onto the drawing board...

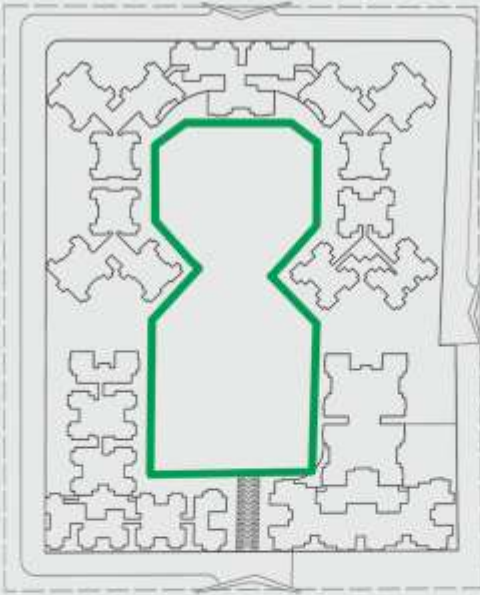
Armed with research-based insights, our planners put their heads together to create a living space that takes every aspect of convenience, practicality and utility into account. From creating logical zones that provide adequate space for everything to envisaging clear pathways for vehicular and pedestrian movement; and from meticulously designing the residential unit to visualising the landscaping, we did it all. The complex is divided into four segments, housing a total of 10 towers. Each tower is named after the world's fastest race tracks.



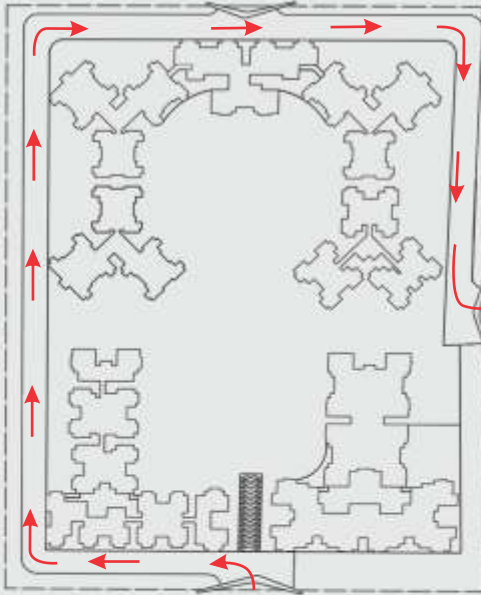
Built - 22.11% Open - 77.89%



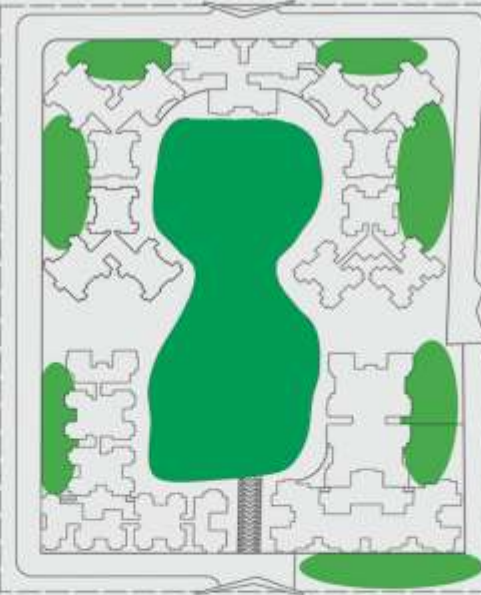
Fire Tender Path



Pedestrian Movement



Vehicular Movement



Central Common Green & Neighborhood Spaces - 56.48%





## Track: Inspiration Buddh International Circuit

The entire project teems with tell-tale signs of the wonderful sport of automobile racing. The jogging track is based on the Buddh International Circuit and offer ample scope for fitness freaks to sweat it out in style. The complex is sleekly landscaped to compliment the architecture while the pathways mimic meandering lines of a racing track, complete with curves. The club is inspired by the paddock.

**OASIS**   
**GrandStand**  
2,3,4 BHK & Penthouse, Yamuna Expressway





## Putting inspiration in sports facilities..

Only a champion like Narain Karthikeyan knows the importance of being fit, calm and relaxed before an event. Breathe in the fresh, crisp air and dive deep into divinity, energising yourself for the day with yoga. Unwind at the world-class swimming pool after a long day at work or inspire yourself to step up your game at the tennis court, badminton court or basketball court.



Gymnasium



Tennis



Basketball Court



Badminton



Jogging Track



## Fun for Everyone in the family



Kids play area



Swimming Pool



Thematic Park

The **GrandStand** houses a large and airy kids' play area with maximum visibility from all sides. An amphitheatre forms the apt backdrop for many a cultural soiree while the delightfully landscaped Thematic Central Park creates a delightful outdoor experience.

A world-class swimming pool, Aroma Garden, Amphitheatre, Pool, Thematic Evening garden are among the key attractions.



Central Green area





## Electrifying interiors that complement a luxurious lifestyle

Every unit has been thoughtfully designed for those who value a good life. The interiors have been done up tastefully with the finest material.

Get floored with the flooring and fall in love with the thoughtful décor.

Relish a lifestyle that is unique and so “you.”



## Inspiring Spaces

- 1 Entrance Plaza
- 2 Aroma Garden
- 3 Kid's Play Area
- 4 Thematic Evening Garden
- 5 Neighbourhood Space
- 6 Swimming Pool
- 7 Labyrinth
- 8 Central Green Space
- 9 Jogging Park
- 10 Amphitheatre
- 11 Wave paving Pattern
- 12 Sports Facilities (Tennis/ Badminton/Half Basketball court)
- 13 Banquet Hall
- 14 Club
- 15 Exit Gate

Disclaimer: While every attempt has been made to ensure the accuracy of the plans shown, all measurements, positioning, fixtures, fitting and any other data shown are an approximate interpretation for illustrative purpose only and are not to scale. No responsibility is taken for any error, omission, miss-statement or use of data shown. The company reserves the right to make changes in the plans, specifications, dimensions and elevations without any prior notice or obligation. 1 sq.ft. = 0.0929 sq.mt., 1 sq.mt. = 10.764 sq.ft., 1 ft. = 0.305 mt. and 1 mt. = 3.281 ft.



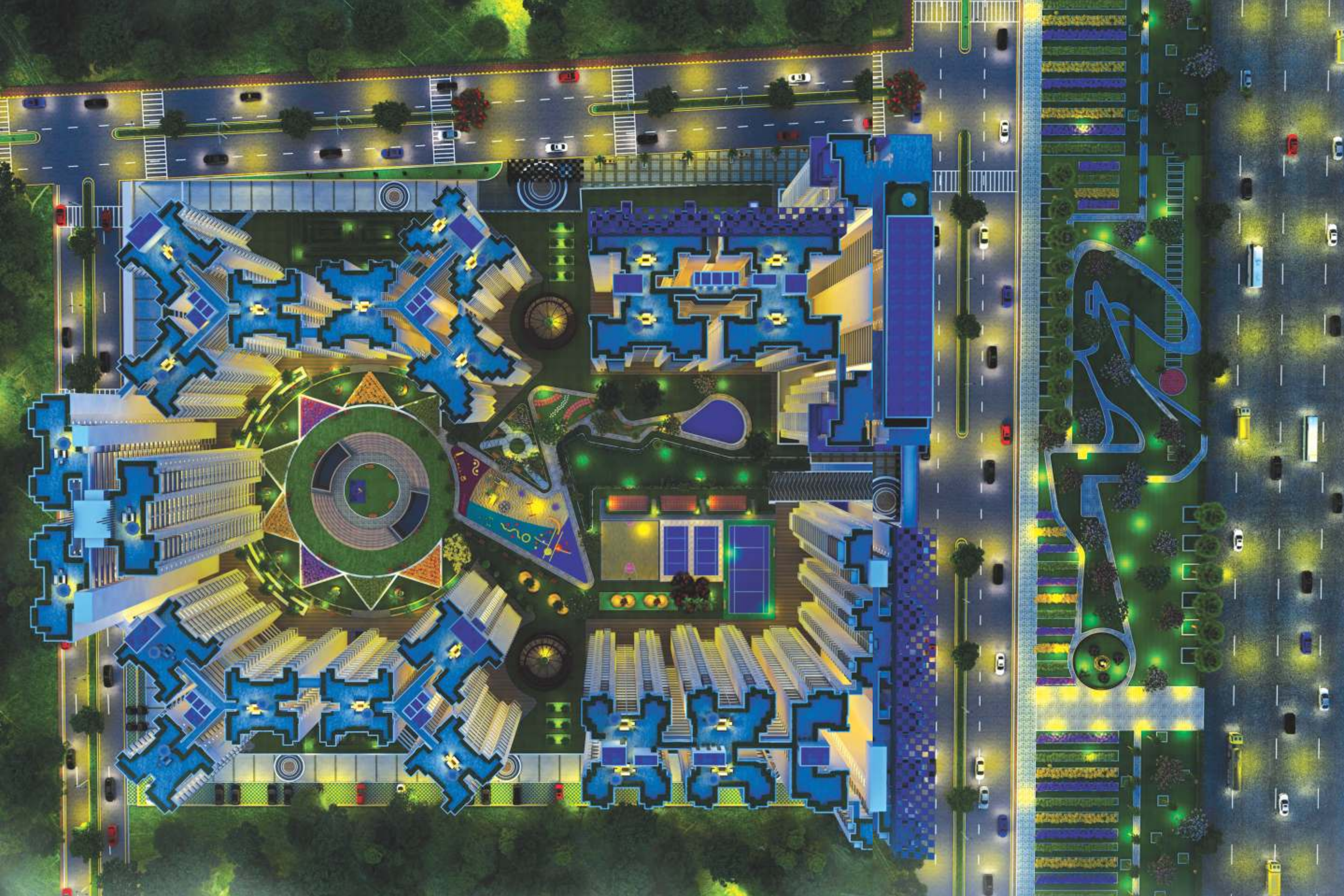


space of your choice

- |                                  |                   |
|----------------------------------|-------------------|
| Karthikeyan Tower                |                   |
| Unit No. : 1 / 2 / 3 / 4 / 5 / 6 | Size: 1395 sq.ft. |
| Caesars Tower                    |                   |
| Unit No. : 1 / 6                 | Size: 1295 sq.ft. |
| Unit No. : 2 / 3 / 4 / 5         | Size: 995 sq.ft.  |
| Detroit Tower                    |                   |
| Unit No. 1/2/3/4                 | Size: 995 sq.ft.  |
| Valencia Tower                   |                   |
| Unit No. : 5 / 6                 | Size: 1295 sq.ft. |
| Unit No. : 1 / 2 / 3 / 4         | Size: 995 sq.ft.  |
| 7 / 8 / 9 / 10                   |                   |
| Aintree Tower                    |                   |
| Monza Tower                      |                   |
| Sepang Tower                     |                   |
| Unit No. : 1 to 12               | Size: 695 sq.ft.  |
| Silverstone Tower                |                   |
| Unit No. : 1 / 6                 | Size: 1395 sq.ft. |
| Unit No. : 2 / 3 / 4 / 5         | Size: 1295 sq.ft. |
| Pheonix Tower                    |                   |
| Unit No. 1 to 12                 | Size: 845 sq.ft.  |
| Premio Tower                     |                   |
| Unit No. : 1 to 8                | Size: 1795 sq.ft. |

Disclaimer: While every attempt has been made to ensure the accuracy of the plans shown, all measurements, positioning, fixtures, fitting and any other data shown are an approximate interpretation for illustrative purpose only and are not to scale. No responsibility is taken for any error, omission, miss-statement or use of data shown. The company reserves the right to make changes in the plans, specifications, dimensions and elevations without any prior notice or obligation. 1 sq.ft. = 0.0929 sq.mt., 1 sq.mt. = 10.764 sq.ft., 1 ft. = 0.305 mt. and 1 mt. = 3.281 ft.





**OASIS**  
**GrandStand**  
*2,3,4 BHK & Penthouse, Yamuna Expressway*

## Masterfully designed for the connoisseurs of class

GrandStand is designed as a self-contained ecosystem that has all the necessary amenities within the complex. The entire area has been thoughtfully designed to blend aesthetics with utility, taking into account the current and future needs of the residents. The rooftops let guests and residents to enjoy a spectacular view, especially at night. Each residential building is a towering structure connected grids blocks, conjoined by a sky bridge.

Disclaimer: While every attempt has been made to ensure the accuracy of the plans shown, all measurements, positioning, fixtures, fitting and any other data shown are an approximate interpretation for illustrative purpose only and are not to scale. No responsibility is taken for any error, omission, miss-statement or use of data shown. The company reserves the right to make changes in the plans, specifications, dimensions and elevations without any prior notice or obligation. 1 sq.ft. = 0.0929 sq.mt., 1 sq.mt. = 10.764 sq.ft., 1 ft. = 0.305 mt. and 1 mt. = 3.281 ft.



3 BHK + 3 T + S.Q. (1795 sq.ft.)

3 Bedrooms

Drawing Dinning

1 Kitchen+ Utility Balcony

3 Toilets

2 Balconies

1 Servant Quarter



3 BHK + 3 T (1395 sq.ft.)

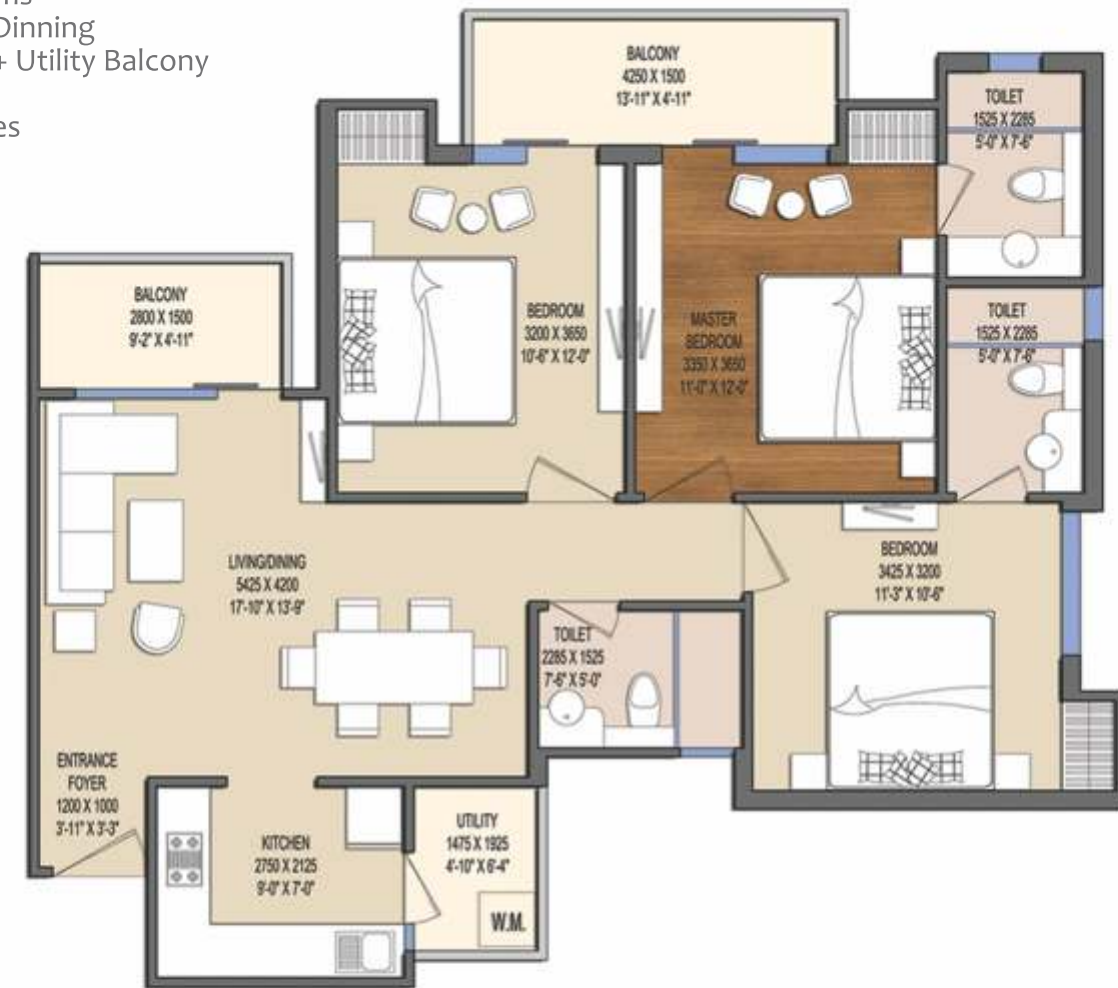
3 Bedrooms

Drawing Dinning

1 Kitchen+ Utility Balcony

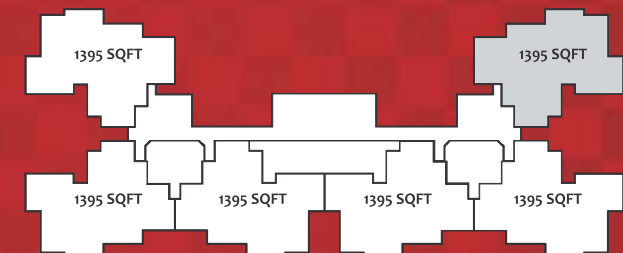
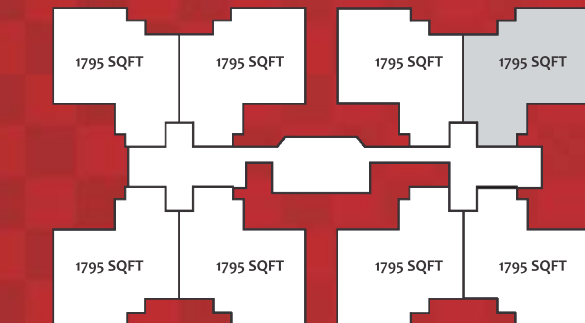
3 Toilets

2 Balconies



## Premio Tower

## Karthikeyan Tower



Disclaimer: While every attempt has been made to ensure the accuracy of the plans shown, all measurements, positioning, fixtures, fitting and any other data shown are an approximate interpretation for illustrative purpose only and are not to scale. No responsibility is taken for any error, omission, miss-statement or use of data shown. The company reserves the right to make changes in the plans, specifications, dimensions and elevations without any prior notice or obligation . 1 sq.ft. = 0.0929 sq.mt., 1 sq.mt. = 10.764 sq.ft., 1 ft. = 0.305 mt. and 1 mt. = 3.281 ft.

Disclaimer: While every attempt has been made to ensure the accuracy of the plans shown, all measurements, positioning, fixtures, fitting and any other data shown are an approximate interpretation for illustrative purpose only and are not to scale. No responsibility is taken for any error, omission, miss-statement or use of data shown. The company reserves the right to make changes in the plans, specifications, dimensions and elevations without any prior notice or obligation . 1 sq.ft. = 0.0929 sq.mt., 1 sq.mt. = 10.764 sq.ft., 1 ft. = 0.305 mt. and 1 mt. = 3.281 ft.

1 sq.mtr. = 10.764 sq.ft

1 sq.mtr. = 10.764 sq.ft





3 BHK + 2 T (1295 sq.ft.)  
3 Bedrooms  
Drawing Dinning  
1 Kitchen+ Utility Balcony  
2 Toilets  
2 Balconies



3 BHK + 2 T (1395 sq.ft.)  
3 Bedrooms  
Drawing Dinning  
1 Kitchen+ Utility Balcony  
3 Toilets  
2 Balconies

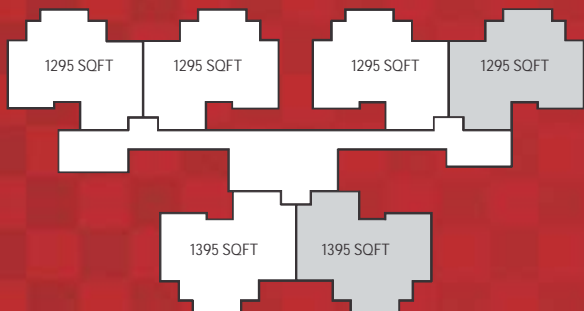


2 BHK + 2 T (995 sq.ft.)  
2 Bedrooms  
Drawing Dinning  
1 Kitchen+ Utility Balcony  
2 Toilets  
3 Balconies



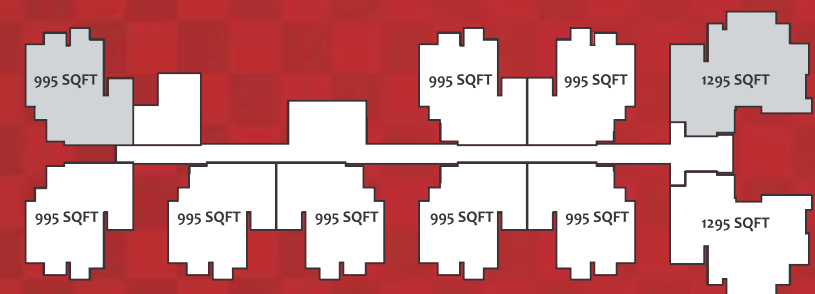
3 BHK + 2 T (1295 sq.ft.)  
3 Bedrooms  
Drawing Dinning  
1 Kitchen+ Utility Balcony  
2 Toilets  
2 Balconies

1 sq.mtr. = 10,764 sq.ft



Silverstone  
Tower

Detroit  
Tower



Caesars  
Tower

1 sq.mtr. = 10,764 sq.ft

Disclaimer: While every attempt has been made to ensure the accuracy of the plans shown, all measurements, positioning, fixtures, fitting and any other data shown are an approximate interpretation for illustrative purpose only and are not to scale. No responsibility is taken for any error, omission, miss-statement or use of data shown. The company reserves the right to make changes in the plans, specifications, dimensions and elevations without any prior notice or obligation . 1 sq.ft. = 0.0929 sq.mt., 1 sq.mt. = 10,764 sq.ft., 1 ft. = 0.305 mt. and 1 mt. = 3.281 ft.

Disclaimer: While every attempt has been made to ensure the accuracy of the plans shown, all measurements, positioning, fixtures, fitting and any other data shown are an approximate interpretation for illustrative purpose only and are not to scale. No responsibility is taken for any error, omission, miss-statement or use of data shown. The company reserves the right to make changes in the plans, specifications, dimensions and elevations without any prior notice or obligation . 1 sq.ft. = 0.0929 sq.mt., 1 sq.mt. = 10,764 sq.ft., 1 ft. = 0.305 mt. and 1 mt. = 3.281 ft.



1 sq.mtr. = 10,764 sq.ft



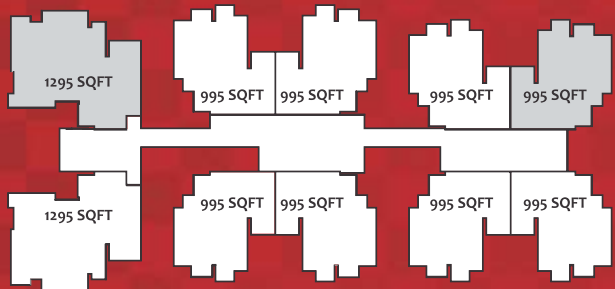
3 BHK + 2 T (1295 sq.ft.)  
3 Bedrooms  
Drawing Dinning  
1 Kitchen+ Utility Balcony  
2 Toilets  
2 Balconies

2 BHK + 2 T (995 sq.ft.)  
2 Bedrooms  
Drawing Dinning  
1 Kitchen+ Utility Balcony  
2 Toilets  
3 Balconies



2BHK+2T (845 Sqft)  
2 Bedrooms  
Drawing Dinning  
1 Kitchen+ Utility Balcony  
2 Toilets  
2 Balconies

## Valencia Tower



## Pheonix Tower



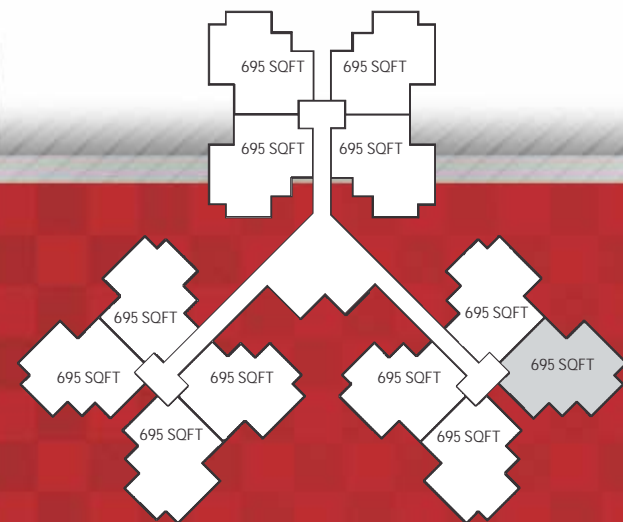
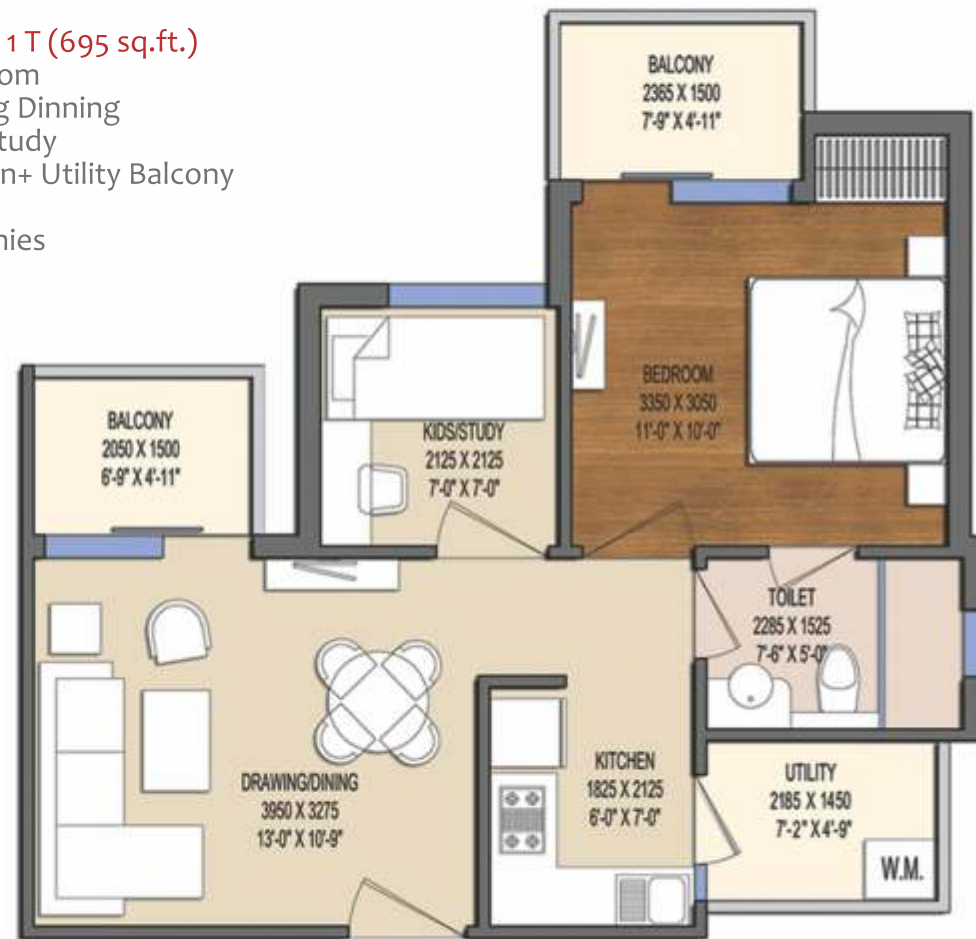
1 sq.mtr. = 10,764 sq.ft

Disclaimer: While every attempt has been made to ensure the accuracy of the plans shown, all measurements, positioning, fixtures, fitting and any other data shown are an approximate interpretation for illustrative purpose only and are not to scale. No responsibility is taken for any error, omission, miss-statement or use of data shown. The company reserves the right to make changes in the plans, specifications, dimensions and elevations without any prior notice or obligation . 1 sq.ft. = 0.0929 sq.mt., 1 sq.mt. = 10,764 sq.ft., 1 ft. = 0.305 mt. and 1 mt. = 3.281 ft.

Disclaimer: While every attempt has been made to ensure the accuracy of the plans shown, all measurements, positioning, fixtures, fitting and any other data shown are an approximate interpretation for illustrative purpose only and are not to scale. No responsibility is taken for any error, omission, miss-statement or use of data shown. The company reserves the right to make changes in the plans, specifications, dimensions and elevations without any prior notice or obligation . 1 sq.ft. = 0.0929 sq.mt., 1 sq.mt. = 10,764 sq.ft., 1 ft. = 0.305 mt. and 1 mt. = 3.281 ft.



2 BHK + 1 T (695 sq.ft.)  
1 Bedroom  
Drawing Dining  
1 Kids/Study  
1 Kitchen+ Utility Balcony  
1 Toilet  
2 Balconies



## Aintree, Monza, Sepang Tower

Disclaimer: While every attempt has been made to ensure the accuracy of the plans shown, all measurements, positioning, fixtures, fitting and any other data shown are an approximate interpretation for illustrative purpose only and are not to scale. No responsibility is taken for any error, omission, miss-statement or use of data shown. The company reserves the right to make changes in the plans, specifications, dimensions and elevations without any prior notice or obligation . 1 sq.ft. = 0.0929 sq.mt., 1 sq.mt. = 10.764 sq.ft., 1 ft. = 0.305 mt. and 1 mt. = 3.281 ft.

## Rich Specifications

### FINISHES

- Internal wall painted with pleasing shades of OBD
- Permanent weather coated heat reflective texture paint/ equivalent on external walls
- Glazed/Ceramic tiles upto 7 ft. Height, wash basin, EWC
- Pre-polished granite platform with stainless steel sink, dado up to 2''-0'' height above platform in ceramic glazed tiles in Kitchen

### FLOORING

- Designer floor tiles in drawing & dining area
- Vitrified tiles in bed rooms
- Anti-skid ceramic tiles in kitchen and toilets
- Ceramic tiles in balconies
- Marble/Kota stone/ tiles in Corridors, Staircase and Lobbies

### FIRE FIGHTING

- Fire Fighting arrangements as per norms

### DOORS AND WINDOWS

- Wooden door frames
- Pre-laminated flush doors/skin moulded shutters
- All external doors and windows of powder-coated aluminium/UPVC

### STRUCTURE

- Earthquake resistant R.C.C. framed structure in accordance with the norms

### ELECTRICAL

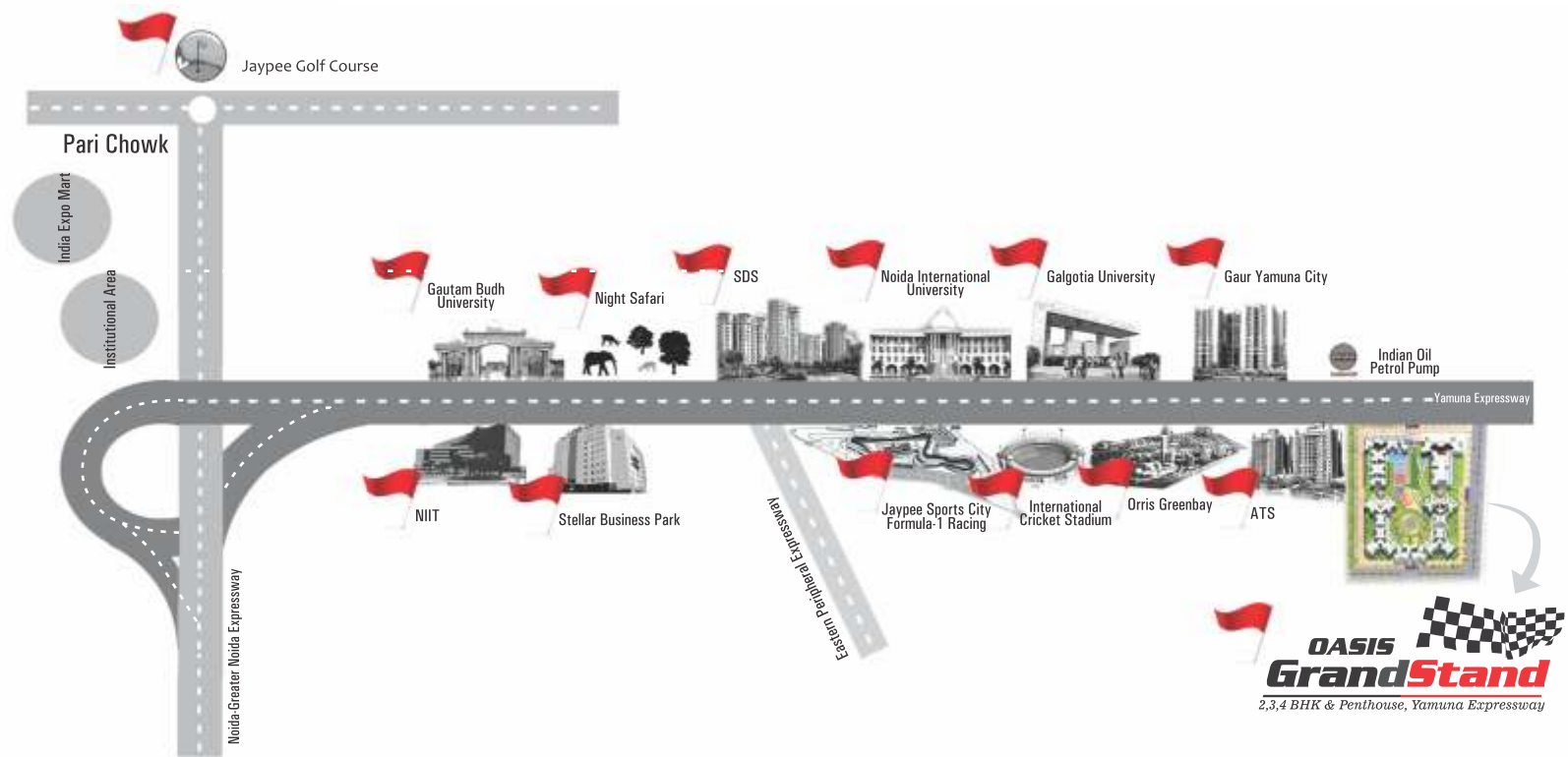
- Modular switches and sockets
- Copper wiring



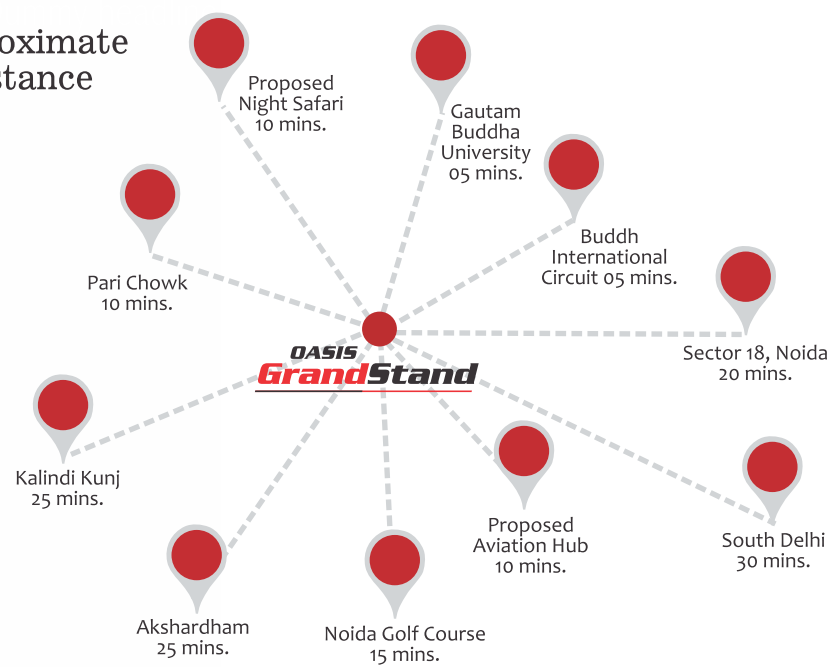
Disclaimer: While every attempt has been made to ensure the accuracy of the plans shown, all measurements, positioning, fixtures, fitting and any other data shown are an approximate interpretation for illustrative purpose only and are not to scale. No responsibility is taken for any error, omission, miss-statement or use of data shown. The company reserves the right to make changes in the plans, specifications, dimensions and elevations without any prior notice or obligation . 1 sq.ft. = 0.0929 sq.mt., 1 sq.mt. = 10.764 sq.ft., 1 ft. = 0.305 mt. and 1 mt. = 3.281 ft.



# Excellent Connectivity



## Approximate Distance



- Right on the main Yamuna Expressway
- Close to the Formula1 Circuit
- Next to proposed Night Safari
- En-route to proposed Aviation Hub
- Schools, Hospitals & Shopping Centers in close vicinity
- Easy & Speedy Connectivity from Delhi
- A preferred destination for people working in South Delhi, Noida & Greater Noida
- Near Eastern Peripheral Expressway

# Professionals Behind the scene

Architect	Structure Consultant	Green Building Consultant	Landscaping Consultant
			

# Our Projects: Benchmark of architectural finesse

 Sector Beta-II, Greater Noida 2/3/4 BHK Apartments	 130 MT. EXPRESSWAY, OPP. SEC. ZETA-I GREATER NOIDA	 Site C, opp. Sector Zeta II Greater Noida
--	--	---

Disclaimer: While every attempt has been made to ensure the accuracy of the plans shown, all measurements, positioning, fixtures, fitting and any other data shown are an approximate interpretation for illustrative purpose only and are not to scale. No responsibility is taken for any error, omission, miss-statement or use of data shown. The company reserves the right to make changes in the plans, specifications, dimensions and elevations without any prior notice or obligation . 1 sq.ft. = 0.0929 sq.mt., 1 sq.mt. = 10.764 sq.ft., 1 ft. = 0.305 mt. and 1 mt. = 3.281 ft.